

Installation of Quickclose on the HP49G+ calculator

The procedure detailed here covers typical new installations.

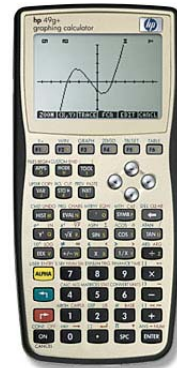
Summary:

Transfer the library file `exp21.lib` and the installer program `inste21` to the calculator and launch the installer program on the calculator.

How do you do this?

First of all, we'll need a **connection** between the calculator and the PC.

This is done using the USB cable and software CD supplied with the calculator:



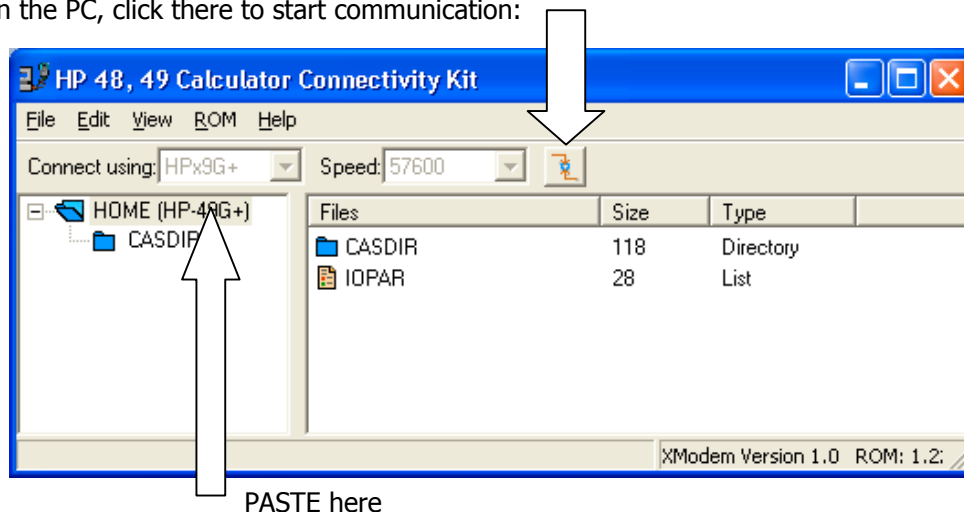
1. Insert the CD into the PC, only then connect the HP49G+ to the PC with the USB cable and switch the calculator on.

Your PC should now automatically detect a USB device and will prompt for installation of the driver. Choose automatic search and Browse towards the CD, as the CD contains the driver. When (if !) the driver has been successfully installed proceed with the next step:

2. Install the connectivity software for HP48Gii and HP49G+

Next , we want to prepare the calculator to receive the software.

3. To **clean the memory**: while the calculator is ON, press the ON key and then also the A and F key . You may need to repeat this a few times till you get the timing right and the display says: Recover Memory YES/ NO. Press NO, then press ENTER and then press NO again (!) Start up the **XMODEM** communication protocol by pressing the right-shift key, then the right arrow key. The command line in the display says XSERVE(). Now press the ENTER key. The display should read 'Xmodem Server' 'waiting for command'
4. On the PC, click there to start communication:



5. Using Explorer, **COPY** the files EXP21.LIB and INSTE21 from the Quickclose disk and **PASTE** them on the HOME directory. It'll take a few seconds to **transfer the files**.
6. On the calculator, press the VAR key.
7. Press the INSTE21 softkey (B key), then press ENTER key to launch the installer program, which will create directories etc and guide you through its set-up parameters.

Done.