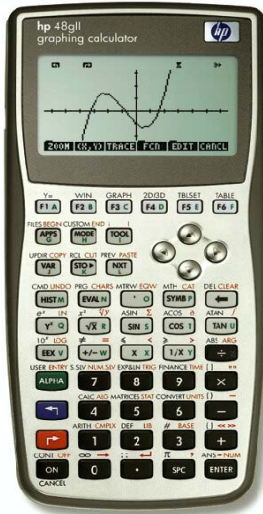


Installation of Quickclose on the HP48Gii calculator

The procedure detailed here covers typical new installations.



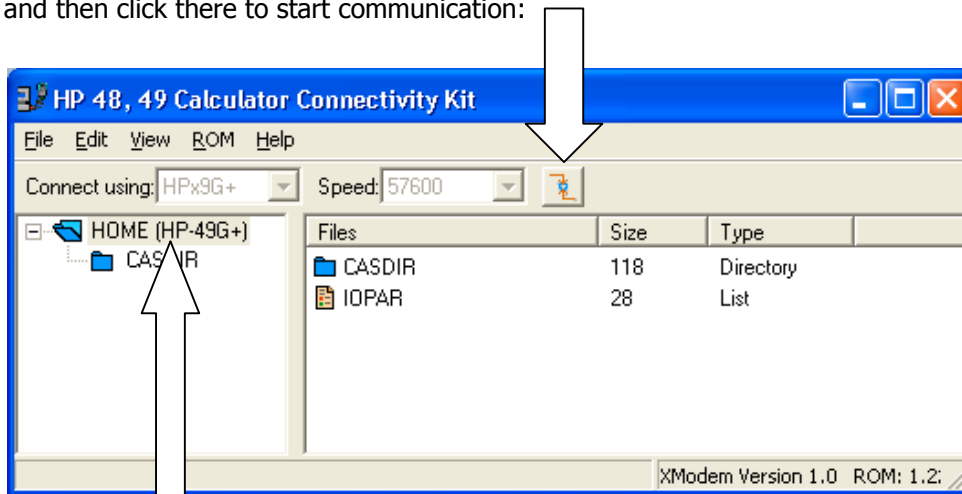
Summary:

Transfer the library file `exp21.lib` and the installer program `inste21` to the calculator and launch the installer program on the calculator.

How do you do this?

First of all, connect the calculator to the 9pin serial com port of your computer with the supplied cable. (This is not a USB connection, like the HP49G+)

1. Install the connectivity software from the included CD.
Note that the software is the same as supplied with the HP49G+, but different from the software used with the HP48G+ and HP49, which have now been discontinued.
2. Insert the AAA batteries and the back-up battery
To **clean the memory**, with the calculator on, press the **A** and **F** key and also the **ON** key. You may need to repeat this a few times till you get the timing right and the display says: Recover Memory YES/ NO. Press **NO**, then press **ENTER** and then press **NO** again (!) Start up the **XMODEM** communication protocol by pressing the right-shift key, then the right arrow key. The command line in the display says `XSERVE()`. Now press the **ENTER** key. The display should now read 'Xmodem Server' 'waiting for command'
3. On the PC,
 - a. set the communication speed to **115200**
 - b. select the **com port** on the PC you've plugged the cable into
 - c. and then click there to start communication:



PASTE here

4. Using Explorer, **COPY** the files `EXP21.LIB` and `INSTE21` from the Quickclose disk and **PASTE** them on the HOME directory. It'll take a few seconds to transfer the files.
5. On the calculator, press **ON** key to leave the Xmodem mode and then press the **VAR** key.
6. Press the **INSTE21** softkey to launch the installer program, which will create directories etc and guide you through its set-up parameters.