

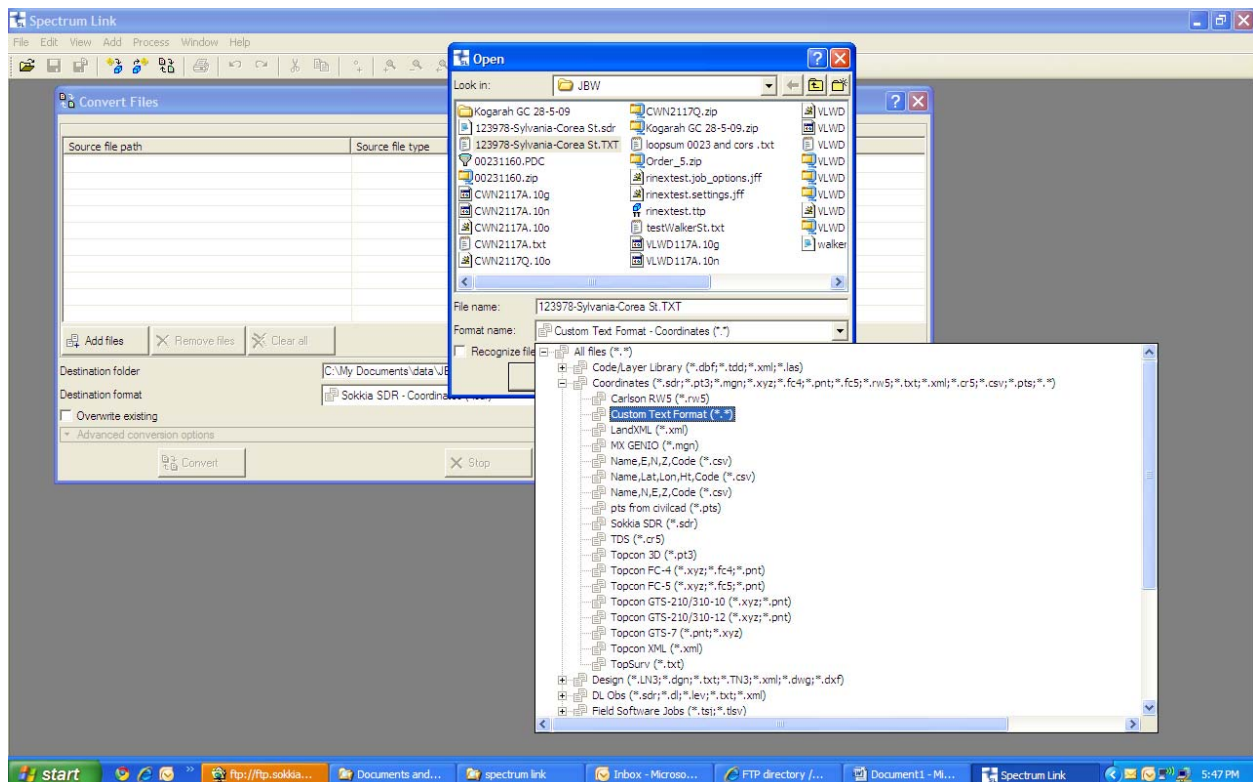
How to get an ascii points file into your SET550RX

Using Spectrum Link to convert to an SDR file

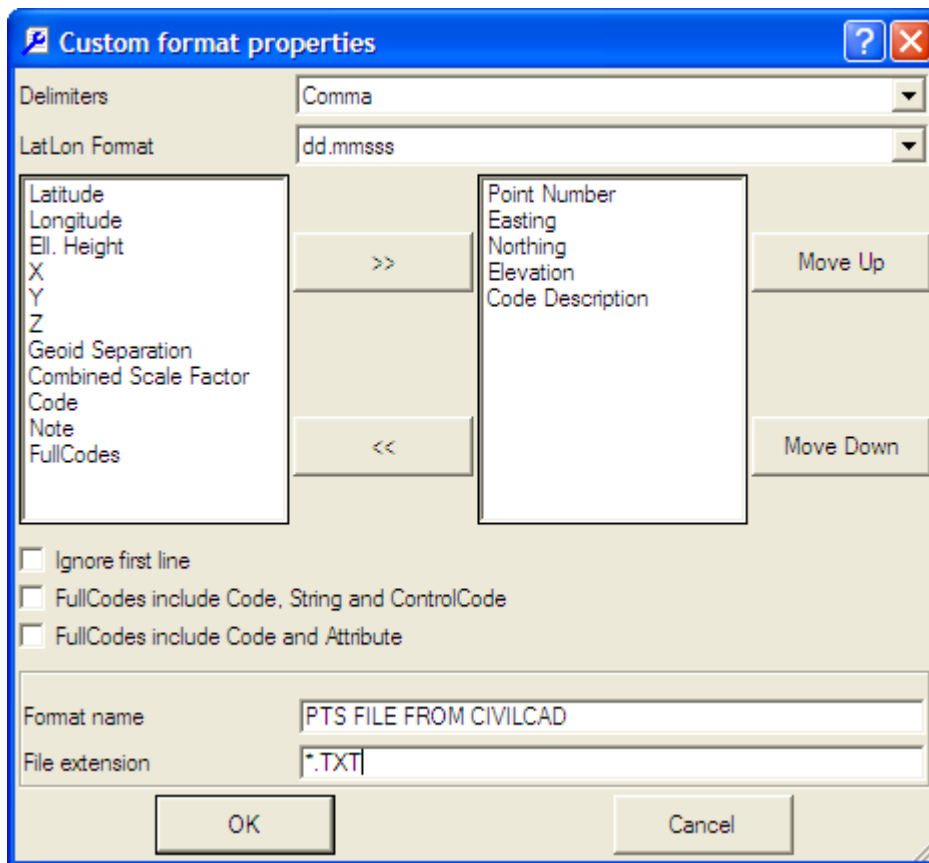
Spectrum Link can convert a number of standard formats into other formats. The default txt format is for files that have Northing first, then Easting, as is common in the USA. However do not despair as you can customize your own txt format.

Below the import of a simple points file in a custom ascii format is explained in detail.

1. Start Spectrum Link and open the File > Convert Files menu
2. Click on the Add files button and select the Custom Text Format (in Coordinates sublist), see screensnap below.



3. After you click the Open button you can define your own format:
Select a field and click the right arrow to get each field across to the right hand side so that it matches the contents of your file.
Add a name and an extension (e.g. .PTS) if you want to make this your standard conversion for future use.



4. Close the Custom format properties window.
5. Set the destination folder (e.g. your USB Thumbdrive) and the file format – SDR in our case.
6. Now you can click on the Convert button in the main screen to convert your file to SDR format

The second stage is to get the points from the SDR file which we have just created into the SET550RX.

On the instrument,

1. Select a new job to receive the stake-out points or clear existing 'Known Points' register in the current job.
New job: Press Escape until you see the MEM softkey. Press this key, then JOB, JOB selection, LIST to pick your job in JOB selection (measurements) as well as Coord Search JOB.
To clear: Press Escape until you see the MEM softkey. Press this key, select Known data, press the Return key. Arrow down to select Clear. Confirm
2. Pick file from USB drive (or SD if that's what you use)
 Press Escape until you see the MEDIA softkey, enter Media Selection, select USB
 Select Load known Pt. The current job name is displayed as a reminder, press OK.
 Select the sdr file with your points, press Enter and Confirm the format is SDR33
3. To check on the points, go MEM, Known data, View. Pressing the Enter key displays the coordinates for the current point in the list.