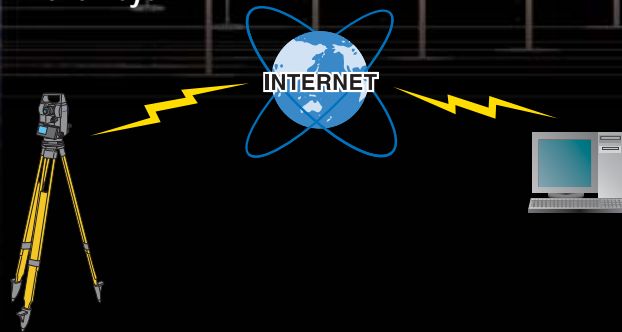


# SOKKIA



## Instantaneous data transfer between any worksite and your office.

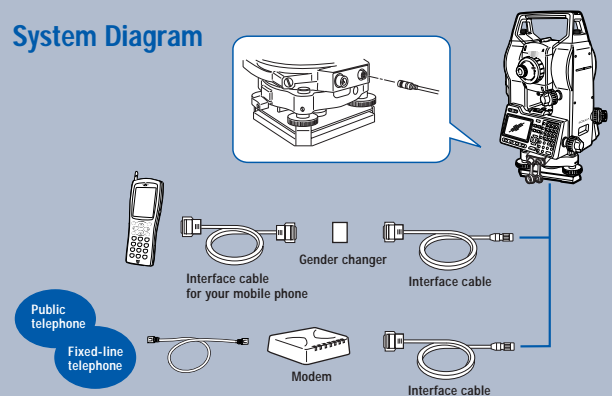
The SFX function harnesses the power of the Internet to enable Sokkia's Total Stations to send data to and receive data from your office in the blink of an eye.



- The Total Station can send surveyed data to a specified e-mail address or FTP server.
- It can also receive coordinate data for setting-out from your office computer or FTP server.
- It is no longer necessary for surveyors to stop by the office to hand over their data. They can transfer it to and from anywhere, even the other side of the globe!
- The office-based operator can receive data and start CAD operation seconds after the field surveying is complete.
- All SFX functions can be performed via the Total Station's operation panel. Just connect the cellular phone (and modem, if necessary) and total station using the appropriate cables, establish an Internet connection, and select the job files. Multiple job files can be sent out simultaneously.
- Data should be in the SDR33, SDR2x or CSV format.
- Password protection is available to prevent unauthorized use.

*Get the job done even quicker, and enjoy an enhanced level of productivity with Sokkia Field-info Xpress.*

### System Diagram



*SFX requires connectivity using a wireless phone with a service provider capable of e-mail data transfer to an external source, as well as an active e-mail account and/or FTP server. Consult your local wireless provider for proper equipment and connectivity requirements.*

### SOKKIA CO.,LTD.

ISO9001 Certified (JQA-0557)  
<http://www.sokkia.co.jp/english/>

INTERNATIONAL SALES DEPARTMENT  
260-63 HASE, ATSUGI, KANAGAWA, 243-0036 JAPAN  
PHONE +81-46-248-7984 FAX +81-46-247-1731