



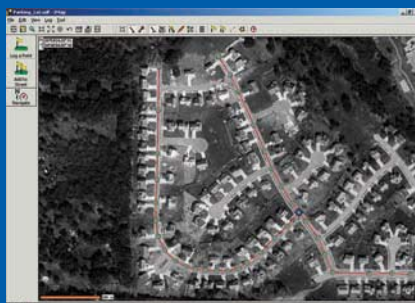
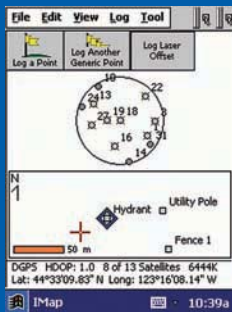
IMap
Data Collection
& Office Software

IMap offers comprehensive GIS mapping tools with a remarkably simple interface and intuitive workflow. Get up-to-the-second positional information, including easy-to-interpret graphical status displays and quality indicators, ensuring accurate data collection and navigation. IMap consists of IMap data collection software, a Windows® CE data collector and IMap Office — optional office software and companion to IMap. IMap software can be loaded onto a variety of data collection devices, including the HP iPAQ, Juniper Systems, Inc.® Allegro CX™ and Two Technologies JETT®•ce.



IMap Features

- Collect multiple feature types (Point, Line, Area/Polygon).
- Customize the output of your collected data with IMap's ASCII Output Wizard.
- Develop and edit waypoint lists to be used for navigation.
- Display vector files and raster images as basemaps, edit basemap features, or overlay images using multiple layers.
- Export data directly from the data collector to a variety of industry standard formats.
- Gather position data with GPS, laser rangefinder, or by selecting a position on the basemap.
- Navigate to waypoints, data points, basemap features, coordinates and points along a line.
- Several standard data formats are supported, including SHP, MIF, DXF, DGN, TIF, JPG and DOQ.
- SHP File Extraction allows you to extract specific regions to download into your data collector for use as a basemap.
- Compatible with SOKKIA's Axis3 and GSR2650 LB receivers, along with other GPS Mapping systems.
- Image trimming, compression and geo-referencing capabilities with IMap Office.
- Create custom zone files with IMap Office, which can be downloaded to your data collector.



IMap Data Collection Software Specifications

Minimum Specifications		Recommended Specifications	
Operating System	Microsoft® Windows® CE	Operating System	Microsoft® Windows® CE
Memory	8 MB RAM	Memory	64 MB RAM
Ports	1 x RS232	Ports	1 x RS232
Display	240 x 320 resolution	Display	240 x 320 resolution

IMap Office Software Specifications

Minimum Specifications		Recommended Specifications	
Operating System	Microsoft® Windows® 95	Operating System	Microsoft® Windows® XP
Processor	Pentium® class	Processor	Pentium® class
Memory	128 MB RAM	Memory	512 MB RAM
Ports	1 x RS232	Ports	1 x RS232
Display	VGA Display	Display	VGA Display
Drives	CD-ROM	Drives	CD-ROM, CF or DSD Reader

Compatible Data Collectors

HP iPAQ, Allegro CX™, JETT®•ce, SDR8100, Toughbook 01, DAP Microflex CE5320, Recon, Ranger

Design and specifications are subject to change without notice.

Sokkia GPS Worldwide

CANADA	+1-905-238-5810 www.sokkiacanada.com
CHINA	+86-21-63541844 www.sokkia.com.cn
EUROPE	+31-36-5322880 www.sokkia.net
JAPAN	+81-46-248-7984 www.sokkia.co.jp
SOUTH KOREA	+82-2-514-0491 www.sokkia.co.kr
LATIN AMERICA	+1-305-599-4701 www.sokkialatinamerica.com
NORTH AMERICA	+1-913-928-2787 www.sokkia.com
OCEANIA	+61-2-4925-7730 pointaustralia@bigpond.com
SINGAPORE	+65-6479-3966 www.sokkia.com.sg

Dealer Information

790-0-0021
Printed in the U.S.A.

POINT, Inc. — Integrated Measurement Solutions
©2005 POINT, Inc. SOKKIA is a trademark of SOKKIA Co. Ltd. All rights reserved.
All other trademarks are the properties of their respective owners.

